

## Mini Submarine Electrophoresis System for Molecular Biology

**NEW** Mupid<sup>®</sup>-2plus



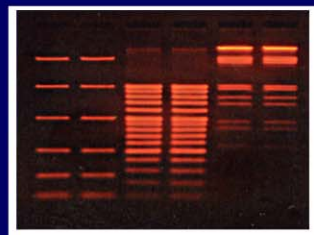
Detachable power supply



Buffer Drain at  
the tank corner



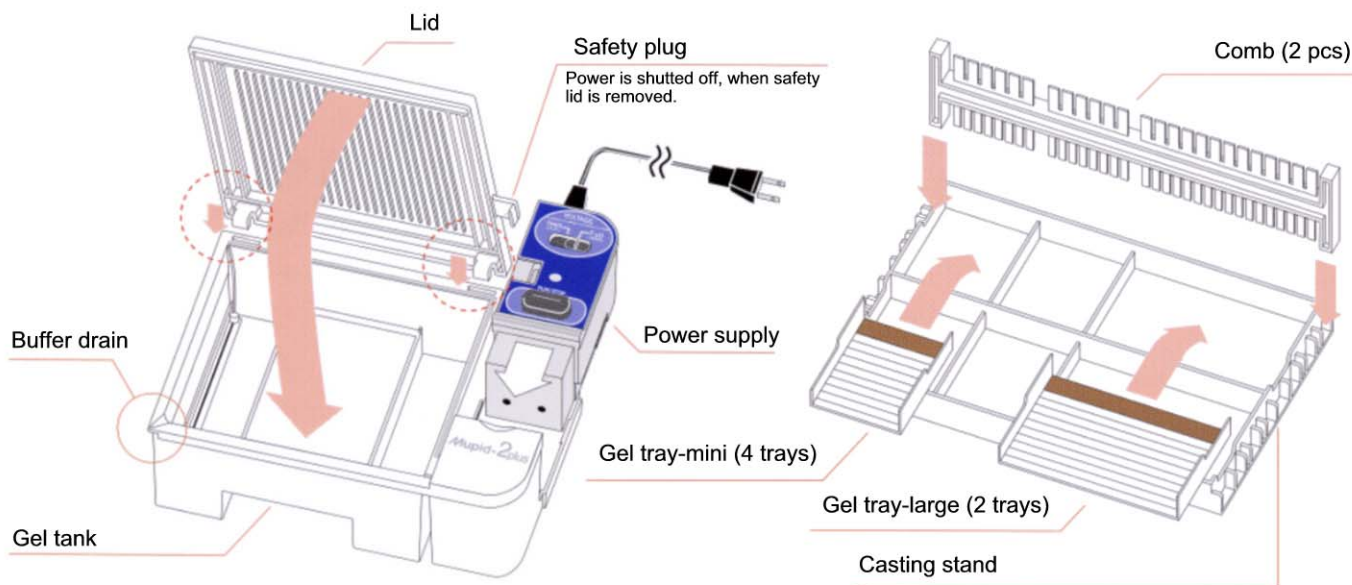
Washable tank



DNA ladders, EtBr stain, 1xTBE

# Mupid-2plus Electrophoresis

## Specification



Gel tank	Overall size	187.5mm(W) x 139.5mm(L) x 57.0mm(H)			
	Tank size	133.0mm(W) x 120.6mm(L) x 47.5mm(H)			
	Buffer capacity	Max. 300ml with gel in position			
	Material	PPHOX			
	Lid size	157.0mm(W) x 139.5mm(L) x 13.0mm(H)			
Power supply	Overall size	43mm(W) x 109mm(L) x 52mm(H)			
	Input voltage	AC100~120V (A step-down transformer is required for use at over 120V)			
	Material	PPHOX			
	Fuse	250V, 0.8A			
Gel casting set	Casting stand size	240mm(W) x 126mm(L) x 17.5mm(H)		1	
	Number of gel	2 large gels and 4 mini gels		2 Large gel trays 4 Mini gel trays	
	Gel tray size	Large tray size : 109mm(W) x 60mm(L)			
		Mini tray size : 55mm(W) x 60mm(L)			
	Comb size	10mm(W) x 240mm(L) x 42mm(H)		2 pcs. each	
	Well form	Large gel	6mm(W) x 1mm(L) x 12well		
			4mm(W) x 1mm(L) x 17well		
Mini gel		6mm(W) x 1mm(L) x 12well			
		4mm(W) x 1mm(L) x 8well			

\* An optional step-down transformer is required for use at 220-240V.

\* Specification of the gel tray and the comb are common to the last models such as **Mupid, Mupid-2, Mupid-3, i-Mupid and Mupid-21, Mupid- $\alpha$** .

	<h3>CAUTION</h3>	<p>For safety reasons, please read the manual thoroughly before use.</p>
---	------------------	--



World Headquarters

**OPTIMA INC.**

Rogie Bldg. 5F, 1-48-11 Itabashi, Itabashi-ku,  
Tokyo 173-0004 Japan  
Tel.+81-3-5375-2351 Fax.+81-3-5375-2360  
E-mail: optima@optimajp.com

U.S.A Operations

**OPTIMA USA, INC.**

2254-B Landmeier Road, Elk Grove Village  
IL 60007 U.S.A  
Tel.+1-847-758-8834 Fax.+1-847-758-8836  
E-mail: optima@optimajp.com

Distributor